

NEIGHBORHOOD INFO

Real  
Estate  
One®

AND LOCAL ATTRACTIONS

# SALINE



REAL ESTATE ONE - SALINE

# HISTORY

## SALINE

Saline was founded as a village in 1832 and it wasn't long before it grew, both in population and size. It was an important stage-stop on the Chicago Road, and the town attracted a number of artisan workshops and mills. But it was actually the railroad that made the village grow. During the Civil War, so many young men were drawn into the ranks of the military that there was a serious labor shortage. This caused local investments in agricultural equipment to more than double during the 1860s.

By the end of the war, farmers were competing in the expanding commercial marketplace. A desire for a reliable and inexpensive means to transport large amounts of staple crops to market prompted 32 citizens to affix their names to a petition calling for money to be raised to invest in Detroit, Hillsdale, and Indiana Railroad stock. Between the farmers and the merchants, who also saw the possibility of advancing their own interests, the money was raised and sufficient stock was purchased so that the locals convinced the railroad to build a line between Ypsilanti and Hillsdale. It was opened for service on July 4, 1870.

As the turn of the century loomed on the horizon, an electric interurban trolley line operated between Detroit, Ann Arbor, and Jackson. Saline's car, known as Old Maude, made frequent trips on rails that ran parallel to Michigan Avenue, connecting with the main line at Ypsilanti. Old Maude made trips "into the city" possible and provided young people studying at the Ypsilanti Normal School with transportation between home and school. The trolley operated about 25 years and was powered by a transformer, whose tower building is long gone.

Development of both automobiles and the trucking industry reduced travel by train and trolley. Rail passenger service to Saline was discontinued in the late 1930s; freight service hung on until the early 1960s.



Photo: Saline Depot

In spite of the beginnings of the depression, Saline continued to upgrade. The Old Union School was torn down in 1930 and a new Art Deco building was constructed on the same site and used the same name. The following year, the Village of Saline became the City of Saline. Becoming a city gave relief to voters who otherwise would need to travel on Election Day to polling places in several different townships.

The Saline area remained a farming community throughout the 20th century. There was little money to be seen during depression years, but the heavy blows of the times did not affect Saline as greatly as it affected people in the larger cities of our nation. Farmers had always been self-sufficient; there was always food for the table. Add that to the frugality of Germans and Englishmen and one could observe families who knew how to "make do" with what they had on hand.

With a population of just under 10,000 in 2005, Saline prides itself on community involvement. The schools, churches, district library, hospital, parks and recreation, arts, and museums offer something for everyone. Housing and employment opportunities draw new families to the area daily. Together with the surrounding townships, it is one busy community.

# NEIGHBORHOODS

## OF THE SALINE AREA

### **Brookview Highlands**

Brookview Highlands homes were constructed between 1994 and 2003 by numerous custom builders. The community is set on 145 acres of land located just alongside the Brookside Golf Course. Homes are situated on large lots with a minimum size of 1 acre. The neighborhood has an active Homeowners Association.

### **Brassow Woods**

Offering a perfect rural feeling, Brassow Woods is situated in Lodi Township with a Saline mailing address. This is a beautiful luxury home neighborhood in a sought after location. Brassow Woods offers serenity and exclusivity. Residents have the chance to enjoy the beauty of the natural environment around them thanks to the large acre plots in this neighborhood. This community started development back in 2004 and 2005.

### **Gunther Gardens**

Gunther Gardens is immersed in local history. The area was originally owned by the Gunther Family; German Immigrants in the early 20th century who developed a thriving botanical and landscaping business as well as numerous other businesses. They were hit by the Great Depression and lost everything. The land, however, remained lush and the plants and trees teemed with life. In the early 1990s, the land was purchased by a developer and this small subdivision of high end luxury homes was developed.

### **Harwood Farms**

Harwood Farms is located west of US 23 off of W. Michigan Avenue. This subdivision was constructed by Peters Building Company, located just a short distance east of the City of Saline. Construction began at Harwood Farms back in 2006.

### **High Creek**

This beautiful neighborhood is located just a short drive southwest of the City of Saline off of Willis Road. Residents of High Creek benefit from a Saline address. High Creek is tucked away from busy traffic and was constructed between 1994 and 2000.

### **Hunters Ridge**

Hunters Ridge subdivision is a beautiful place to live. It is just south of Michigan Avenue with easy access to I-94, US-23, and other major roads to Ann Arbor and beyond! Downtown Saline is just around the corner, as is shopping along Michigan Avenue, Rolling Hills County Park, and so much more.

### **Lodi Country Estates**

Great spacious homes at Lodi Country Estates are perfect for a growing family looking to relocate to a friendly community. Located northwest of the City of Saline, Lodi Country Estates is easily accessible to Ann Arbor and downtown Saline. Being just off of the Ann Arbor-Saline Road, you can be in Ann Arbor in minutes. These custom built homes in Lodi Country Estates were built from the 1970s up to the 2000s.

### **Maplewood Farms**

Maplewood Farms is a fantastic community in a convenient spot in Saline. This single family home neighborhood contains beautiful mostly ranch style properties that were constructed between the 1970s and 1990s. As for local amenities, downtown Saline is just a short drive, and Tefft Park and the Saline Recreation Center are just around the corner! Maplewood Lane's bowling alley is down the street too.

### **Stonecliff**

This neighborhood is a tucked-away community in a convenient location in Saline and within easy commuting distance to Ann Arbor. Stonecliff homes were constructed between 1980 and 1988. Homeowners at Stonecliff love living right by the Saline River. Residents also enjoy Stonecliff Park, which is a small open space featuring picnic tables and a short trail leading to the edge of the Saline River. Mill Pond Park can be seen from here as it is just across the river and is the largest public park in Saline.

### **Torwood**

Torwood is located in the City of Saline. It is just west of the city, across from Mill Pond Dam off of Austin Drive. These homes started to be constructed back in 1996 when the community first opened. Torwood is within walking distance to the Saline River, fishing and many parks. Mill Pond Park is one such park that borders the sub off the Saline River.

### **Travis Pointe**

Travis Pointe is home to the award winning Travis Pointe Country Club where residents enjoy memberships and all that it has to offer - including the acclaimed golf course. The Country Club also has an outdoor pool, playground, tennis courts, work out rooms and more. Many of the homes in Travis Pointe are custom built adding a certain diversity in home styles that make up the mix of properties. Most homes were constructed between 1979 and 1994 by various builders.





## EVENTS, ENTERTAINMENT, ARTS AND CULTURE

### **Celtic Festival - [www.salineceltic.org](http://www.salineceltic.org)**

The festival includes various events such as music, dance competition, highland athletic competitions, jousting, sheep herding demonstrations, sword and fencing demonstrations, and much, much more.

### **Saline Oktoberfest - [www.salinemainstreet.org/oktoberfest](http://www.salinemainstreet.org/oktoberfest)**

Saline's Oktoberfest celebrates its sister city relationship with Lindenberg, Germany. The term, Oktoberfest, is borrowed from the name of the famous 16-day celebration held in Munich, Germany where visitors consume great quantities of food and beer and dance to traditional music.

### **Farmers Market - [www.cityofsaline.org/farmersmarket](http://www.cityofsaline.org/farmersmarket)**

-On Saturdays - May through October - 8:00am-Noon  
Located Downtown on S. Ann Arbor St., ½ block south of Michigan Ave.

-On Tuesdays - June through September - 3:00pm-7:00pm  
Located at the Saline District Library, 555 N. Maple Rd., ½ mile north of Michigan Ave.

### **Saline Summerfest [www.salinesummerfest.org](http://www.salinesummerfest.org)**

Summerfest features the traditional family-oriented food, music, and fun of Saline's annual "Picnic in the Park." Add a juried craft and art show, a trolley tour of Saline's most intriguing historical sights, a 5K run/walk event, and other special treats. At Summerfest, there is something for everyone.

### **Saline Community Fair - [www.salinefair.org](http://www.salinefair.org)**

Started in 1935 the Saline Community Fair has something for everyone. Carnival rides, animal and arts and crafts exhibits, tractor pulls, auto enduro derby, fair queen contest, merchants tent, livestock auction and more!

### **Saline Depot Museum**

The Saline Railroad Depot was built with a late Victorian architectural style in 1870 and was used until 1962. On July 4, 1995, the depot was dedicated as a museum and accepted to the National Historic Register. The exhibit also includes the freight room, a fully furnished 1906 caboose, and an 1830s livery barn.

**Visit [salinehistory.org](http://salinehistory.org) for more information.**

### **Saline District Library - [www.saline.lib.mi.us](http://www.saline.lib.mi.us)**

Saline District Library sits on 14.5 acres of wooded wetlands in the heart of Saline. The library serves the residents of the Saline Public Schools district seven days a week.

### **Two Twelve Arts Center - [www.twotwelvearts.org](http://www.twotwelvearts.org)**

The Two Twelve Arts Center is a non-profit organization funded by the Cowan Slavin Foundation. The Center contributes to the cultural life of the residents of Saline and its environs by supporting a full schedule of classes, programs, performances, and exhibits.

### **Rentschler Farm Museum**

Four generations of Rentschlers lived and worked on this farm from 1904 until 1998 when the City of Saline purchased the early 20th century farmhouse with Queen Anne-style porch, several outbuildings, and four acres for the purpose of a museum. Volunteers from the Saline Area Historical Society have developed the farm with a focus on the changing farm life from 1900 to 1950. This time of great change in agriculture and family living, with transitions from horse to tractor, kerosene to electricity, and an agriculture-based economy to a manufacturing economy, are all visible in the history of this family farm. **Visit [salinehistory.org](http://salinehistory.org) for more information.**

# PARKS AND REC

## PARKS AND SPORTS

### **Brecon Park**

397 Nichols Dr.

### **Canterbury Park**

219 Willis Rd.

### **Colony Park**

1012 Colony Dr.

### **Curtiss Park**

440 W. Michigan Ave.

### **Marlpool Park**

511 Marlpool Dr.

### **Mill Pond Park**

565 W. Bennett St.

### **People's Park**

209 W. Monroe St.

### **Risdon Park**

241 S. Ann Arbor St.

### **Stonecliff Park**

450 Saline River Dr.

### **Tefft Park**

1780 Woodland Drive East

### **Wilderness Park**

300 Willis Rd.

### **Other Recreation**

#### **Saline Parks & Recreation Department**

1866 Woodland Dr. | Saline, MI 48176

[www.cityofsaline.org/parks](http://www.cityofsaline.org/parks)

#### **Saline Rec Center**

1866 Woodland Drive | Saline, MI 48176

[www.salinerec.com](http://www.salinerec.com)

The Saline Rec Center is an affordable family friendly center that meets the entire family needs. There is a large gym with an indoor walking track, a free weight room, a nautilus weight room, cardio weight room, 2 pools, a hot tub, aerobic studio, racquetball court, family changing room, party room, meeting space, tennis courts, play structures, sand volleyball courts, disc golf course and more. Conveniently located at the corner of Textile and Woodland Drive, just minutes from Ann Arbor. Open to everyone, not just Saline residents. Memberships available or daily usage fees.

#### **Maplewood Lanes Bowling**

830 Woodland 734-429-5457

[www.maplewoodlanes.com](http://www.maplewoodlanes.com)

#### **Learn more about Saline!**

[www.ci.saline.mi.us](http://www.ci.saline.mi.us)

[www.salinechamber.org](http://www.salinechamber.org)

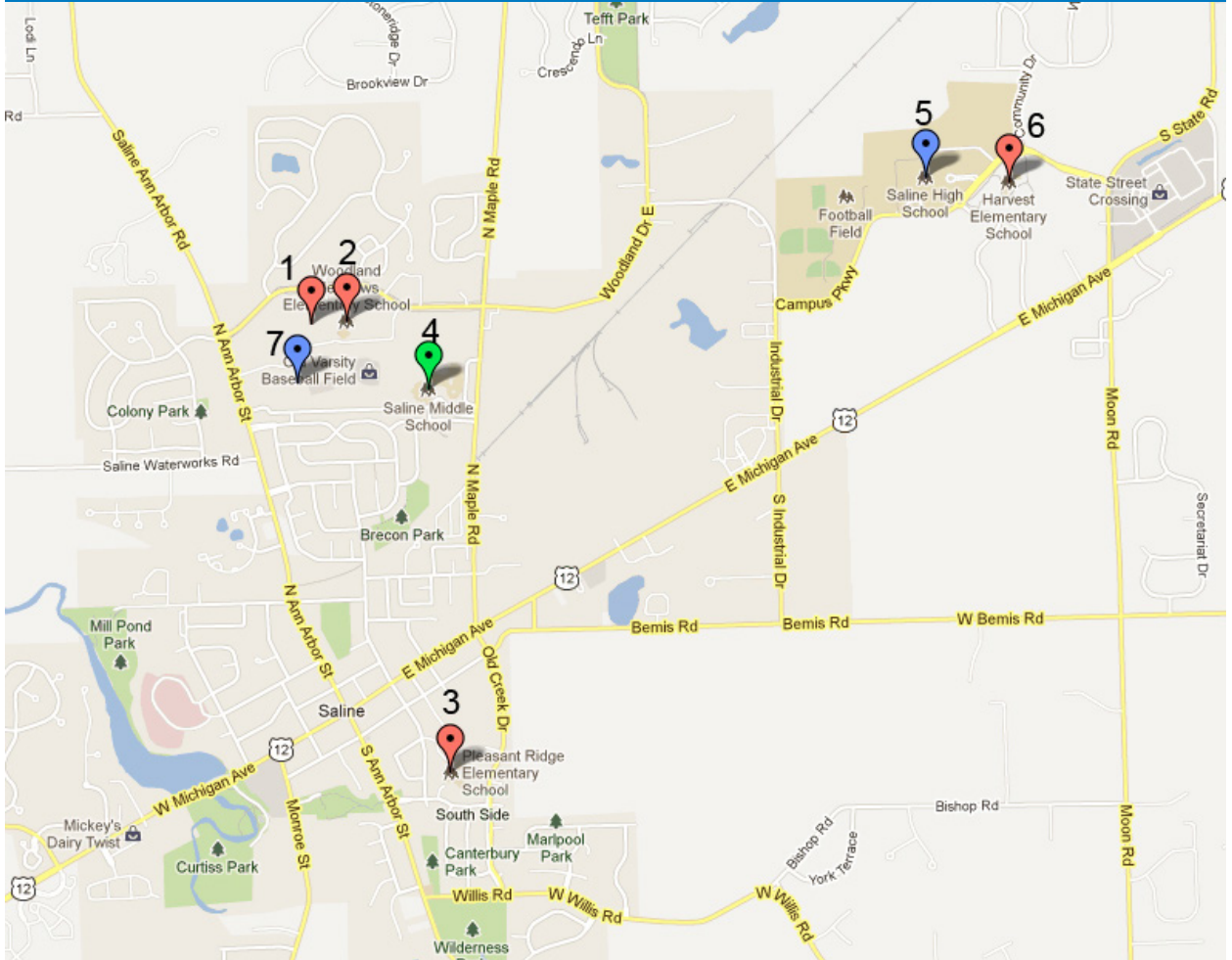
[www.besaline.com](http://www.besaline.com)

[www.heritage.com/saline\\_reporter](http://www.heritage.com/saline_reporter)

(Saline's local newspaper)

# SCHOOLS

ELEMENTARY, MIDDLE, AND HIGH SCHOOLS



## 1. Heritage School

290 E. Woodland Dr. East | Saline, MI 48176

## 2. Woodland Meadows Elementary

350 Woodland Dr. East | Saline, MI 48176

## 3. Pleasant Ridge Elementary

229 Pleasant Ridge Dr. | Saline, MI 48176

## 4. Saline Middle School

7190 North Maple Rd. | Saline, MI 48176

## 5. Saline High School

1300 Campus Parkway | Saline, MI 48176

## 6. Harvest Elementary

1155 Campus Parkway | Saline, MI 48176

## 7. Saline Alternative High School

7265 North Ann Arbor St. | Saline, MI 48176

For more information visit:

[www.salineschools.org](http://www.salineschools.org)



# INFORMATION

LOCAL AREA GOVERNMENT, HEALTH, AND SAFETY

## **City of Saline** - [www.ci.saline.mi.us](http://www.ci.saline.mi.us)

100 North Harris Street  
Saline, MI 48176  
734-429-4907

## **Fire Department - 911 Emergency**

205 E. Michigan Ave.  
Saline, MI 48176  
734-429-4440

## **Police Department - 911 Emergency**

100 N. Harris St.  
Saline, MI 48176  
734-429-7911

## **Post Office**

108 N Maple Rd.  
Saline, MI 48176  
734-944-5859

## **Secretary of State**- [www.michigan.gov/sos](http://www.michigan.gov/sos)

General Phone Line: 888-767-6424  
353 N. Maple, Ann Arbor, MI 48103  
2720 Washtenaw, Ypsilanti, MI 48197  
1113 M-52, Chelsea, MI 48118

## **Local Transportation**

### **via People's Express 877-214-6073**

The City of Saline subsidizes the cost of transit services for low-income and senior citizens through People's Express. People's Express bus transportation is available to residents of Saline for transportation within the City of Saline and to certain destinations in Ann Arbor and Ypsilanti. Reservations must be made 30 hours in advance. On demand rides are available only as time permits. For confirmed reservations, please call 1-877-214-6073 between 10:00 am to 2:00 pm. After hours voice messages are accepted Monday through Friday. Cancellations must be made at least two hours prior to pick-up time. Transit services are available Monday through Friday between 8:00 am and 5:00 pm. Service is not available on weekends and People's Express is closed on normal holidays. Fares are \$2.00 for each one-way trip in the City of Saline and \$3.00 for each one-way trip outside the City of Saline. There is no charge for a required personal attendant.

## **St. Joseph Mercy Saline - Urgent Care**

### **[www.stjoeshealth.org](http://www.stjoeshealth.org)**

400 W Russell St, | Saline, MI 48176

Joseph Mercy Saline Health Center provides outpatient services to residents of southern Washtenaw, Monroe and Lenawee counties. In 1991, St. Joseph Mercy Saline joined St. Joseph Mercy Ann Arbor and St. Joseph Mercy Livingston to become part of Saint Joseph Mercy Health System.

## **What New Saline Residents May Want to Know**

### • **Electricity**

To establish water and/or sewer service at a residence or business in Saline, contact DTE at 1-800-477-4747

### • **Gas**

To establish water and/or sewer service at a residence or business in Saline, contact DTE Energy customer service at 1-800-477-4747

### • **Water/Sewer**

To establish water and/or sewer service at a residence or business in Saline, Contact City Hall in person at 100 North Harris Street. A landlord or realtor is allowed to do this for you. Water Service connections will be done during regular customer service hours only: Monday - Friday, 8:00am - 5:00pm.

### • **Trash & Recycling Services**

This service is established automatically by the city when residential water service is established. You may dispose of one bag or can of trash, up to 33 gallons or 40 pounds, per week. Saline's recycling program allows newspaper, plastic, metal cans, chipboard, mixed paper, and corrugated cardboard to be placed curbside weekly for collection. There is no limit to the amount of recycled items, and no charge for their collection.

### • **Telephone/Cable Service**

Frontier 1-800-921-8101 or Comcast 1-888-COMCAST

### • **Cable Services**

Comcast Television - 4659 Washtenaw, Ann Arbor, MI 48108

Phone: 800-266-2278



NEIGHBORHOOD INFORMATION



AND LOCAL ATTRACTIONS

**SALINE**